



Robert H. Down Reopening Overview 2020-2021

(Updated November 2020 - Pending Board Approval)

Introduction - This is an overview of the current plan at Robert H. Down Elementary School. Specifics to each area will be provided prior to a district survey asking parents to decide between distance learning or blended learning. Every aspect of this plan follows current state and county guidelines regarding physical distancing to keep all staff and students safe as we return to school. The plan must also be flexible enough to allow us to shift into a full distance learning program if we are ordered by county officials to do so. This overview is written following current county guidelines. As the guidelines change, our plan for reopening may be adjusted. We realize that this will not answer all of our community's questions, so if you have questions or comments, please contact Principal Sean Keller by email at skeller@pgusd.org or feel free to text at (831) 275-0083.

Two Programs Offered - Parents would choose one.

1. Full Distance Learning - Students who are medically compromised, per CA Senate Bill 98, and students choosing to remain in Distance Learning do not attend school and participate in distance learning every day
2. Blended Learning program - Students attend school four days each week in AM or PM cohort and participate in asynchronous distance learning at home depending on their cohort time.

Full Distance Learning

- Students do all learning from home
- Daily live interaction with a teacher
- All testing is done online
- Instruction will be computer based, but also include traditional materials (paper, workbooks, manipulatives, etc.) distributed regularly
- Distance Learning program developed by each grade level
- Will have a combination of live instruction (synchronous) and recorded instruction (asynchronous)
- Attendance and online engagement will be monitored

Blended Learning Program

Weekly Attendance for Live Instruction - Students attend school four days each week in AM or PM cohort. When not at school, students participate in asynchronous distance learning at home. Ongoing cleaning/disinfection will occur throughout each day along with nightly custodial services. Groups would be decided by alphabetical order. Considerations will be made for pairing siblings across sites along with students utilizing pods to the best of our ability.

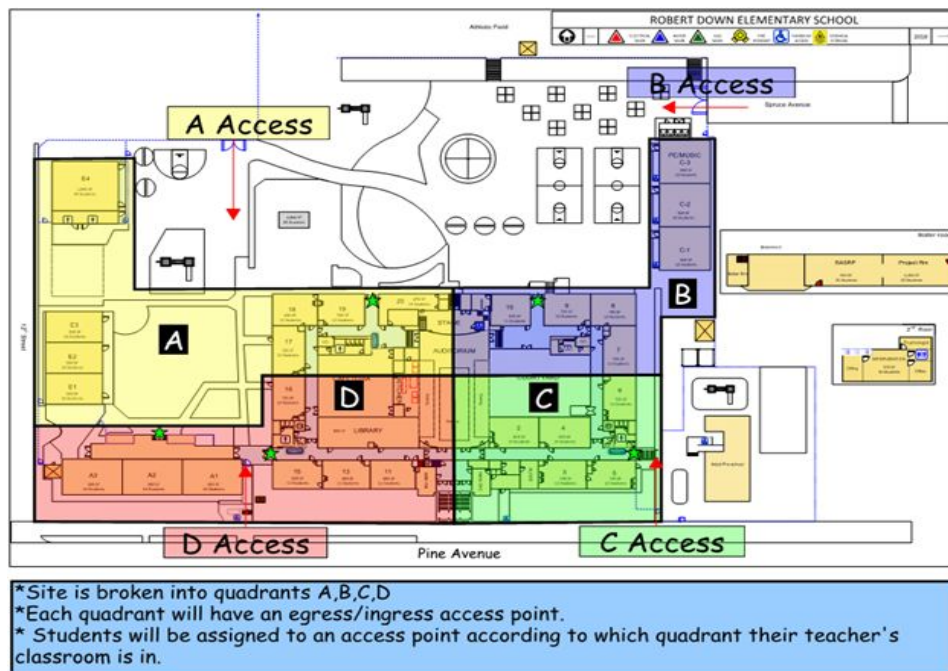
Monday	Tuesday	Wednesday	Thursday	Friday
Morning Meeting for all students.	AM Group (PM Asynchronous)	AM Group (PM Asynchronous)	AM Group (PM Asynchronous)	AM Group (PM Asynchronous)
Teacher Planning & DL	PM Group (AM Asynchronous)	PM Group (AM Asynchronous)	PM Group (AM Asynchronous)	PM Group (AM Asynchronous)

Bell Schedule (Working Draft)- Staggered Start/End Times - Staggered start and end times allow for smaller groups arriving and leaving campus.

Grade	Cohort Group	Start Time	Dismissal
Kindergarten	AM Group	8:30	10:30 (120)
	PM Group	12:00	2:00 (120)
1st & 2nd	AM Group	8:30	11:00 (150)
	PM Group	12:30	3:00 (150)
3rd, 4th, & 5th	AM Group	8:45	11:15 (150)
	PM Group	12:45	3:15 (150)
SDC	AM Group	9:00	11:45 (150)

Student Drop Off & Pick Up

- Student temperatures will be taken but not recorded. Parents will be contacted for students with a fever of greater than 100.4 degrees
- Students will use a different campus entrance based on their classroom location
 - Access Area A: Drive up drop off/pick up using Spruce Ave.
 - Access Area B: Parents may drive onto campus for drop off using Spruce Ave. gate
 - Access Area C: Drive up drop off/pick up using Pine Ave. near Co-Op
 - Access Area D: Drive up drop off/pick up using Pine Ave. bus area
- Parents will not be allowed to accompany students inside the gates
- Students will enter A, B, C, or D access areas according to their classroom location (map below)



- Estimated number of students using each access point
 - Access A (with Room E-1 using D Access): AM - 39 students, PM - 37 students

- Access B: AM - 28 students, PM - 29 students
- Access C: AM - 43 students, PM - 41 students (Possible switch of entry for one class to reduce #)
- Access D: AM - 37 students, PM - 36 students

Special Education

- Our SDC/Inclusion students will be invited back to campus on Tuesday and Wednesday mornings in accordance with the California Department of Education guidelines allowing for small cohorts of special populations of students to return to live instruction
- When all students return to school, the SDC/Inclusion schedule will match that of their general education peers

Before and After School Recreation Program (BASRP)

- BASRP is to be determined as our elementary schools are analyzing the viability of establishing small cohorts that would not mix

Transportation - Detailed information will be available once physical distancing requirements on buses are made clear and accurate capacity can be determined

Personal Protective Equipment

- Students - all students would be required to wear a mask according to county guidelines. This will be adjusted if requirements become more lenient. Students who do not have a mask will be provided one by the school
- Staff - All staff will be required to wear a mask and have the option of wearing a plastic face shield as well

Physical Distancing

- In Class - students will be seated six feet apart. Classes will have 8-14 students in them, 3 in SDC
- Outside - students would remain in their class groups during recess and physical education. They will maintain six feet of distance in all situations where they line up

Recess

- Students will wash their hands whenever they enter or exit the classroom. Additional handwashing stations have been installed throughout our campus to allow up to three students to wash hands, separately, at a time
- Classes will be given a specific area of the playground where they play for that day (one group for each play structure, 4-6 groups on the primary grass/field for lunch, 4-6 groups on primary playground, and 4-6 groups on intermediate playground)
- We will follow all county and state guidelines regarding the sharing and disinfecting of equipment

Lunch

- AM Students will have the opportunity to grab and go lunches as they leave campus
- PM students will eat lunch before they arrive at campus

Restrooms

- Kindergarten students will use the restroom near their classes (A wing and Portable by swings)
- 1st through 5th grade students will use common restrooms with particular stalls assigned to each grade level
- Two students will be allowed in at a time with adults monitoring during recess
- One student per class may access restrooms at a time during class periods although they will not be monitored