

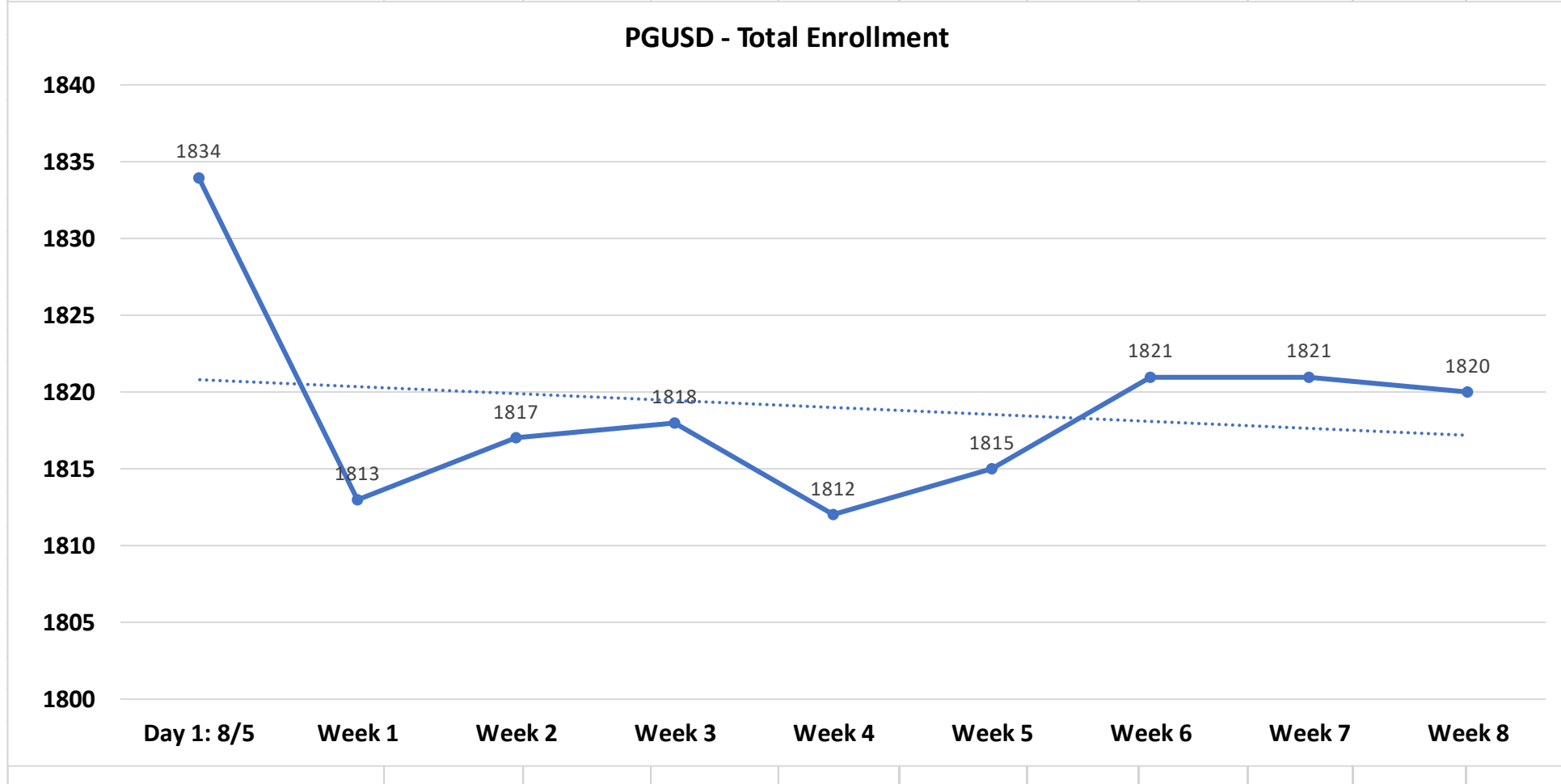
Enrollment and Attendance Trends: Fall, 2021

Pacific Grove Unified School District

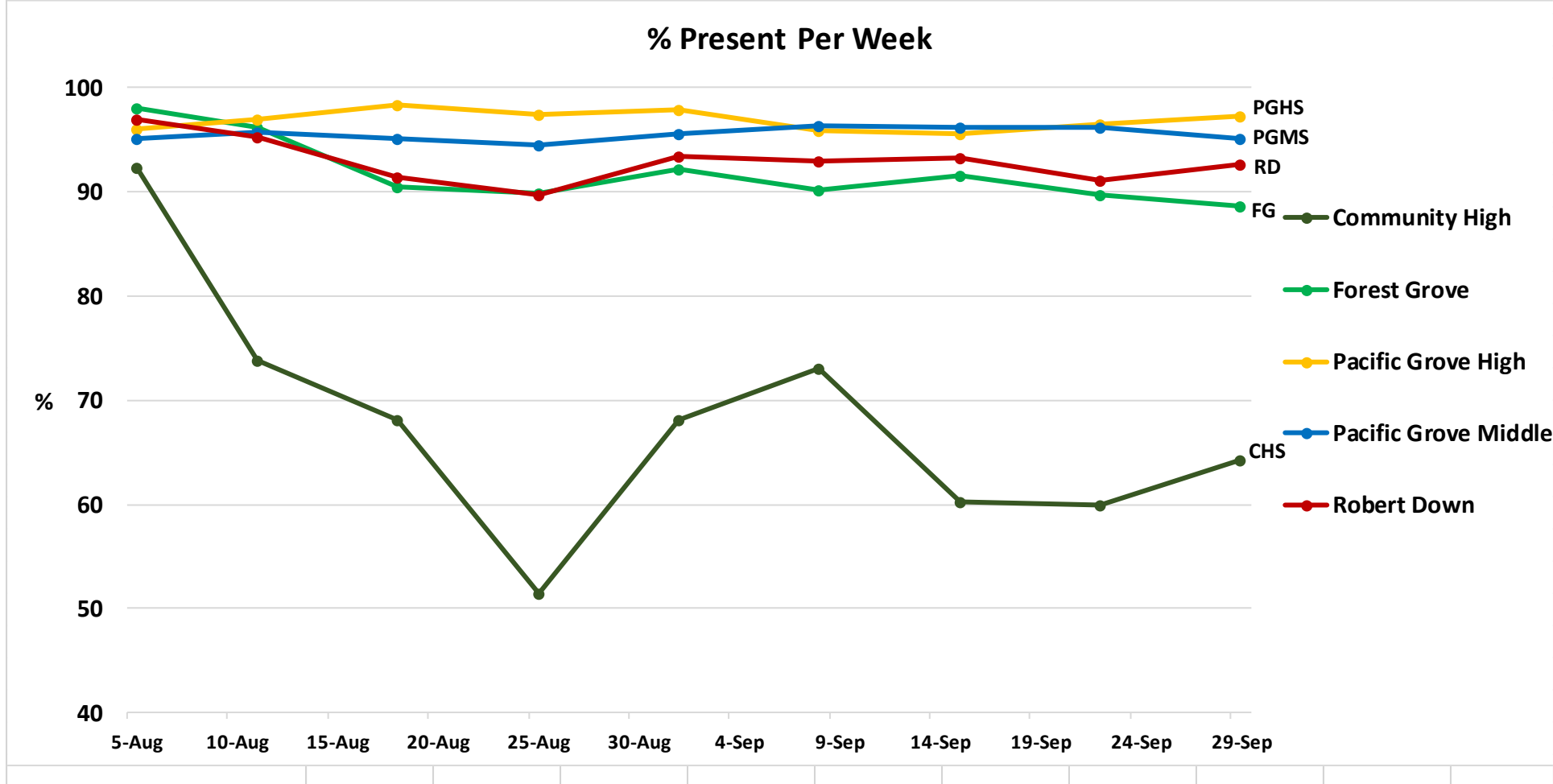
Enrollment - 2021-22

		Projections		Jun	Jul	Aug 5	Aug 11	Sep 14	Oct 6	Nov	Dec	Jan	Feb	Mar	Apr	May
Forest Grove		Apr	May			Aug 5	Aug 11	Sep 14	Oct 6	Nov	Dec	Jan	Feb	Mar	Apr	May
		covid 19				1st Day	5th Day		CBEDs	18th	10th	20th	10th	15th	21st	
TK	1.00	17	17	-	-	16	16	18	-	McDaniel						
	sped=0	17.0	17.0	-	-	16.0	16.0	18.0	-	-	-	-	-	-	-	-
K	3.00	59	60	-	-	67	68	69	-	Fadem 23 - Sweeney 23 - Wright 23						
Boston	sped=1	19.7	20.0	-	-	22.3	22.7	23.0	-	-	-	-	-	-	-	-
1	3.00	65	65	-	-	62	60	60	-	McCarty 18 - Miller 21 - Luciano 21						
Boston	sped=2	21.7	21.7	-	-	20.7	20.0	20.0	-	-	-	-	-	-	-	-
2	3.00	57	56	-	-	63	64	65	-	Welch 21 - Cina 22 - Patel 21						
Boston	sped=2	19.0	18.7	-	-	21.0	21.3	21.7	-	-	-	-	-	-	-	-
3	3.00	60	60	-	-	55	52	58	-	Gordon 19 - Andersen 20 - Flores 19						
Kelly	sped=4	20.0	20.0	-	-	18.3	17.3	19.3	-	-	-	-	-	-	-	-
4	3.00	77	76	-	-	69	67	71	-	Russo 25 - Serpa 23 - Valdez 23						
Kelly	sped=2	25.7	25.3	-	-	23.0	22.3	23.7	-	-	-	-	-	-	-	-
5	3.00	58	58	-	-	66	63	68	-	Condit 23 - Sanchez 21 - Yant 24						
Kelly	sped=4	19.3	19.3	-	-	22.0	21.0	22.7	-	-	-	-	-	-	-	-
Total	19.00	393	392	-	-	398	390	409	-	-	-	-	-	-	-	-
Avg Class Size		20.7	20.6	-	-	20.9	20.5	21.5	-	-	-	-	-	-	-	-
SE (SDC)	2.00	20	19	-	-	-	15	16	-	-	-	-	-	-	-	-
Robert Down																
K	3.00	62	62	-	-	66	67	69	-	Chavez 22 - Kelly 23 - Renteria 24						
Bloomer	sped=2	20.7	20.7	-	-	22.0	22.3	23.0	-	-	-	-	-	-	-	-
1	3.00	67	67	-	-	63	62	61	-	Evans 21 - Smith 20 - Perkins 20						
Bloomer	sped=1	22.3	22.3	-	-	21.0	20.7	20.3	-	-	-	-	-	-	-	-
2	3.00	83	83	-	-	68	66	66	-	Darnell 22 - Gilmore 23 - Johnson 21						
Bloomer	sped=1	27.7	27.7	-	-	22.7	22.0	22.0	-	-	-	-	-	-	-	-
3	4.00	69	69	-	-	80	81	81	-	Ibrahim 20 - Jones 21 - Perlstein 20 - Stejskal 20						
Bloomer	sped=1	17.3	17.3	-	-	20.0	20.3	20.3	-	-	-	-	-	-	-	-
4	3.00	81	81	-	-	66	67	67	-	Brockmeyer 22 - Levy 23 - Pechan 22						
Bloomer	sped=3	27.0	27.0	-	-	22.0	22.3	22.3	-	-	-	-	-	-	-	-
5	3.00	62	62	-	-	74	74	75	-	Dacuyan 26 - Hiserman 25 - Hober 24						
	sped=0	20.7	20.7	-	-	24.7	24.7	25.0	-	-	-	-	-	-	-	-
Total	19.00	424	424	-	-	417	417	419	-	-	-	-	-	-	-	-
Avg Class Size		22.3	22.3	-	-	21.9	21.9	22.1	-	-	-	-	-	-	-	-
SE/Reading	1.00	7	7	-	-	8	8	8	-	-	-	-	-	-	-	-
Middle School																
6		147	147	-	-	126	124	128	-	-	-	-	-	-	-	-
7		129	129	-	-	142	142	141	-	-	-	-	-	-	-	-
8		175	175	-	-	126	126	125	-	-	-	-	-	-	-	-
Total MS	25.00	451	451	-	-	394	392	394	-	-	-	-	-	-	-	-
Avg Class Size		18.0	18.0	-	-	15.8	15.7	15.8	-	-	-	-	-	-	-	-
High School																
9		133	133	-	-	170	167	164	-	-	-	-	-	-	-	-
10		153	153	-	-	129	126	124	-	-	-	-	-	-	-	-
11		138	138	-	-	147	141	141	-	-	-	-	-	-	-	-
12		136	136	-	-	138	135	134	-	-	-	-	-	-	-	-
Total HS	36.40	560	560	-	-	584	569	563	-	-	-	-	-	-	-	-
Avg Class Size		15.4	15.4	-	-	16.0	15.6	15.5	-	-	-	-	-	-	-	-
Community High School																
Total CHS		18	18	-	-	14	14	14	-	-	-	-	-	-	-	-
Total District		1,873	1,871	-	-	1,815	1,805	1,823	-	-	-	-	-	-	-	-
Change		1,944	1,941	-	-	1,874	1,870	1,900	59	106	103	100	132	128	####	(1,871)

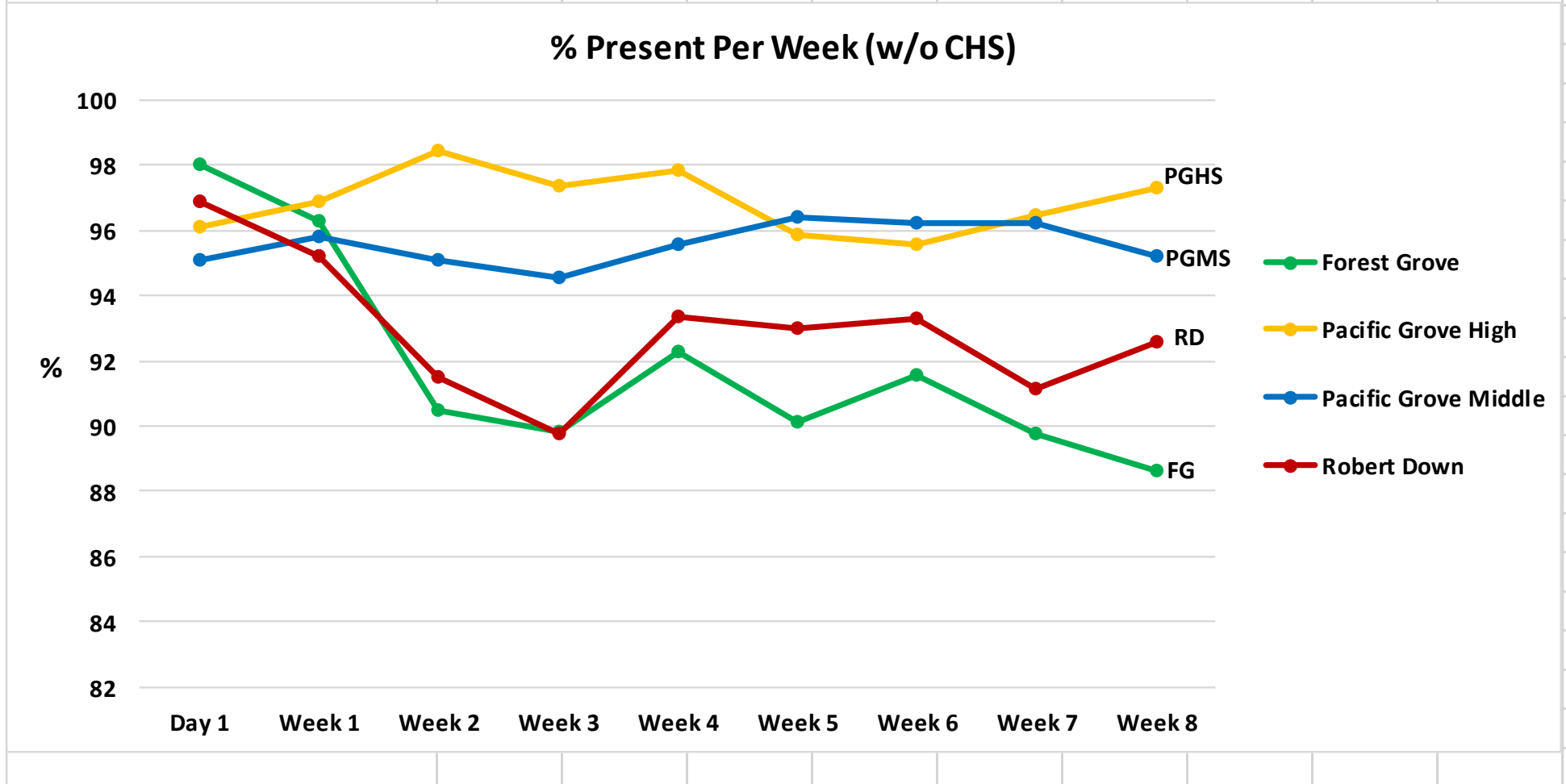
Enrollment Totals	Day 1	Week 1	Week 2	Week 3	Week 4	Week 5	Week 6	Week 7	Week 8
School	5-Aug	11-Aug	18-Aug	25-Aug	1-Sep	8-Sep	15-Sep	22-Sep	29-Sep
Community High	13	13	14	14	13	13	14	14	14
Forest Grove	403	405	407	408	408	408	410	410	410
Pacific Grove High	589	580	580	579	576	575	575	575	575
Pacific Grove Middle	408	390	393	392	391	393	393	392	391
Robert Down	421	425	423	425	424	426	429	430	430
Total Enrollment	1834	1813	1817	1818	1812	1815	1821	1821	1820



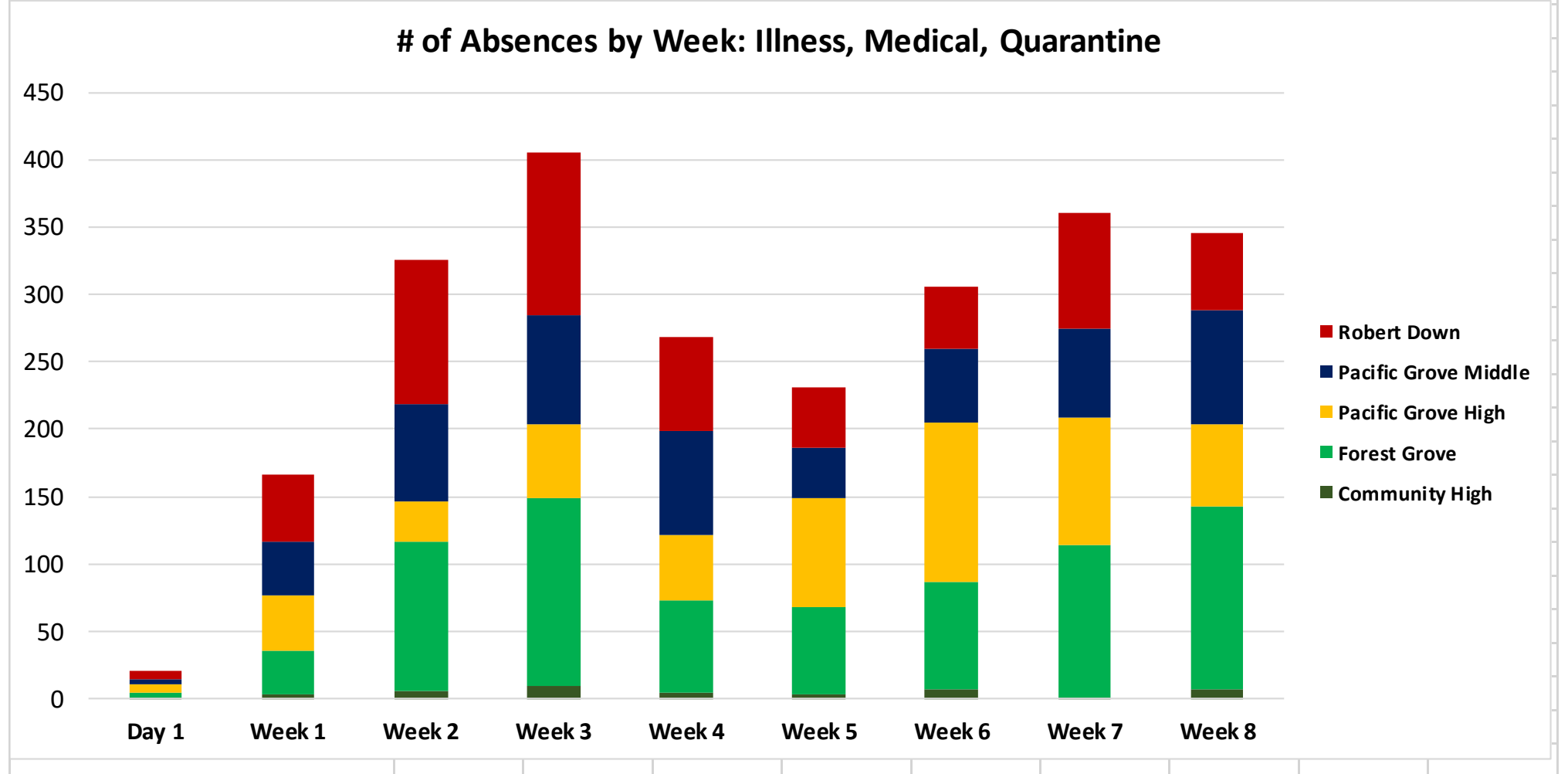
% Present per Week	Day 1	Week 1	Week 2	Week 3	Week 4	Week 5	Week 6	Week 7	Week 8
	5-Aug	11-Aug	18-Aug	25-Aug	1-Sep	8-Sep	15-Sep	22-Sep	29-Sep
Community High	92.31	73.85	68.12	51.43	68.12	73.08	60.29	60	64.29
Forest Grove	98.01	96.29	90.5	89.84	92.25	90.13	91.58	89.75	88.63
Pacific Grove High	96.1	96.91	98.41	97.38	97.85	95.87	95.54	96.49	97.29
Pacific Grove Middle	95.1	95.78	95.1	94.54	95.55	96.43	96.23	96.23	95.2
Robert Down	96.91	95.23	91.47	89.77	93.36	92.99	93.3	91.15	92.6



% Present Per Week w/o CHS									
	Day 1	Week 1	Week 2	Week 3	Week 4	Week 5	Week 6	Week 7	Week 8
Forest Grove	98.01	96.29	90.5	89.84	92.25	90.13	91.58	89.75	88.63
Pacific Grove High	96.1	96.91	98.41	97.38	97.85	95.87	95.54	96.49	97.29
Pacific Grove Middle	95.1	95.78	95.1	94.54	95.55	96.43	96.23	96.23	95.2
Robert Down	96.91	95.23	91.47	89.77	93.36	92.99	93.3	91.15	92.6



# of Absences: Ill, Med, Quar	Day 1	Week 1	Week 2	Week 3	Week 4	Week 5	Week 6	Week 7	Week 8
Community High	1	3	6	10	4	3	7	1	7
Forest Grove	4	33	110	139	69	65	79	113	136
Pacific Grove High	6	41	30	54	48	81	119	95	61
Pacific Grove Middle	3	40	73	82	78	37	55	65	84
Robert Down	7	49	106	120	69	45	46	87	57



# of Absences: Quarantine Only									
	Day 1	Week 1	Week 2	Week 3	Week 4	Week 5	Week 6	Week 7	Week 8
Community High	0	0	0	0	0	0	0	1	0
Forest Grove	0	7	10	6	0	10	13	16	9
Pacific Grove High	0	0	1	0	0	11	17	15	5
Pacific Grove Middle	0	2	4	9	9	0	0	1	5
Robert Down	0	4	35	27	9	2	0	0	1

